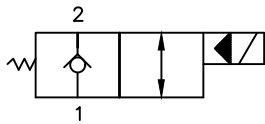


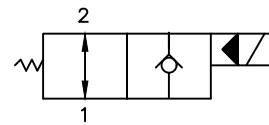
Vazão: 130 lpm
 Pressão: 300 bar

Esquema Hidráulico

F1 Normalmente Fechada

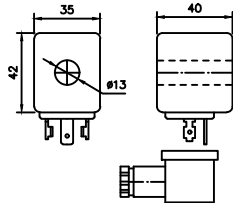


A1 Normalmente Aberta

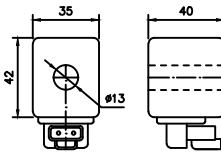


Bobinas

A Conector: ISO4400



B Conector: Deutsch DT04

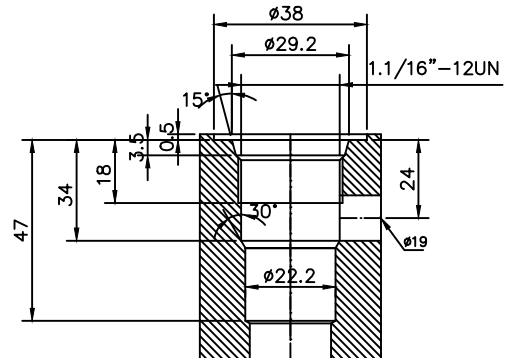


Características Bobinas:

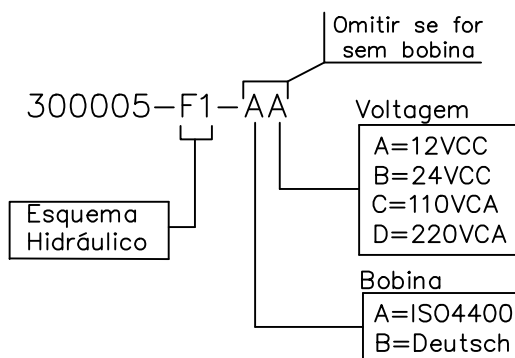
Potência Nominal: 21W
 Isolamento: ClasseH(180°)
 Proteção: IP65

Volts	Corrente Nominal
12 VCC	1,75A
24 VCC	0,87A
220 VCA	0,09A
110 VCA	0,19A

Cavidade SAE 12/2



Como Solicitar



Control Star

Denominação:
 Válvula Solenóide SAE12/2

Código:
 300005-